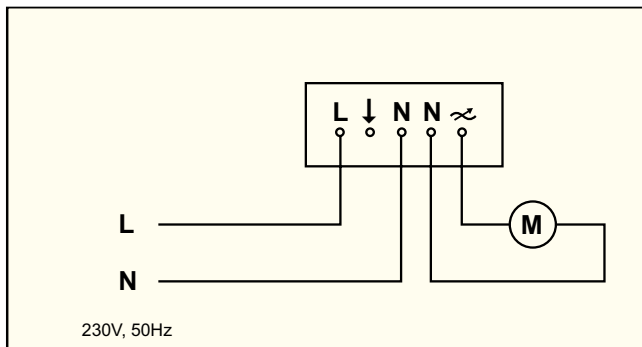
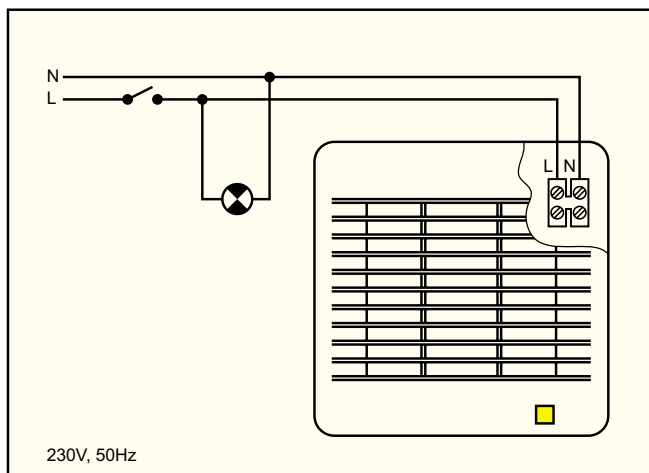


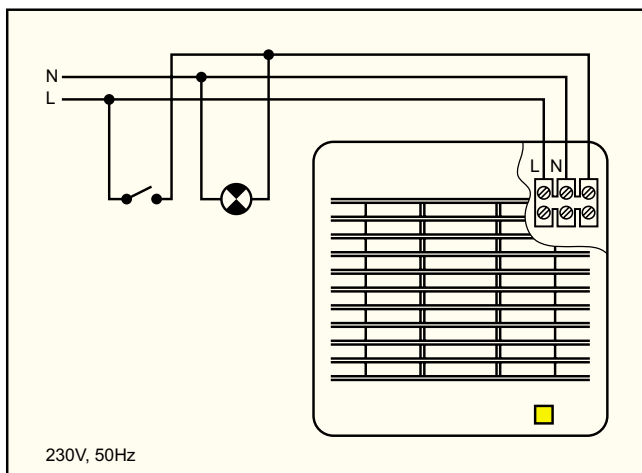
Ritn. 1 TD, TH, CK-60



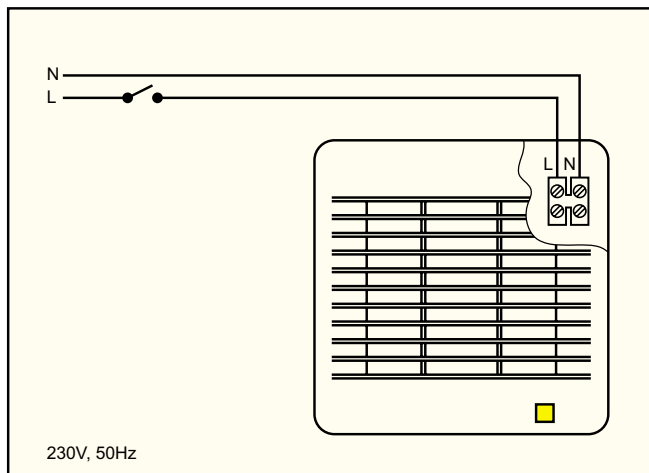
Ritn. 2 REB



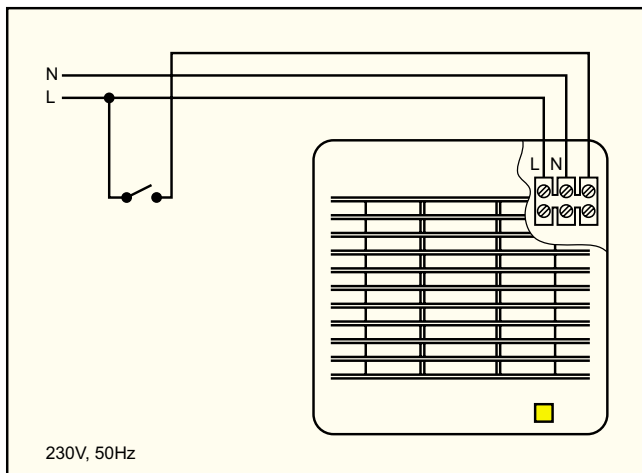
Ritn. 3 EDM-80, EDM-100S/C, EDM-160, EDM-200S/C, EB, EBB, TDM



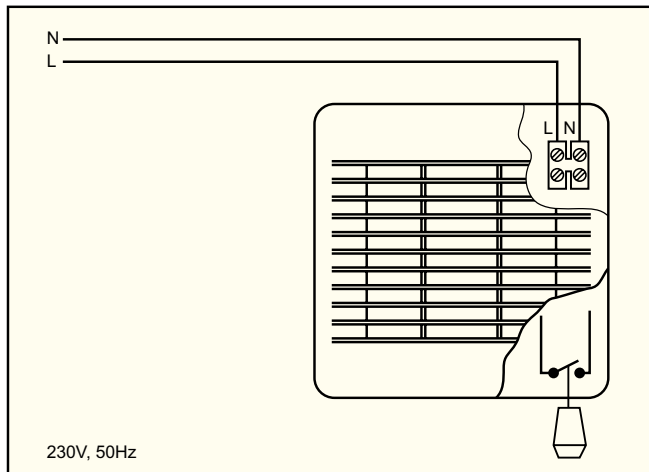
Ritn. 4 EDM-80T, EDM-100T/CT, EDM-160T, EDM-200CT



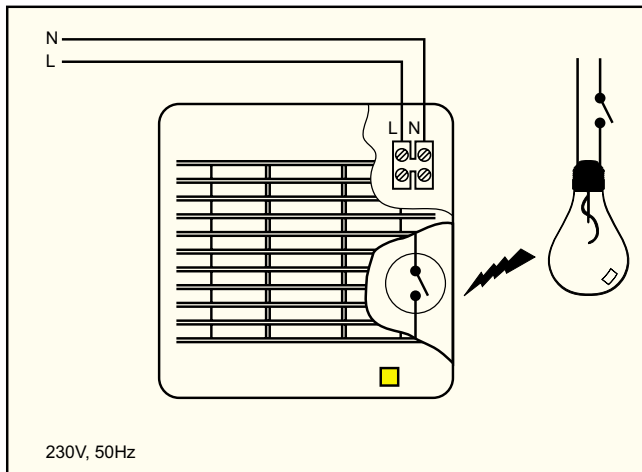
Ritn. 5 EDM-80, EDM-100S/C, EDM-160, EDM-200S/C, EB, EBB, CK-40



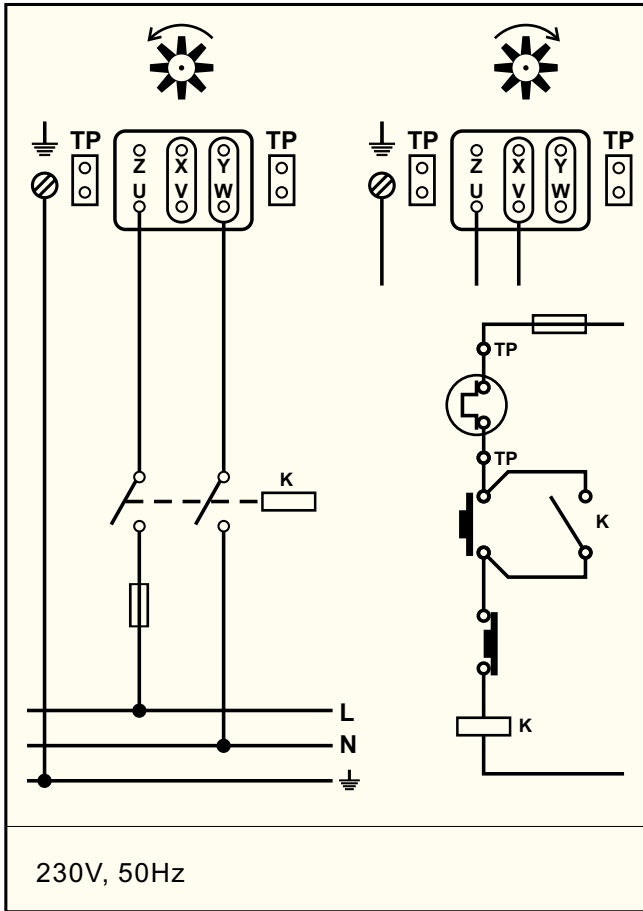
Ritn. 6 EDM-80T, EDM-100T/TC, EDM-160T, EDM-200CT



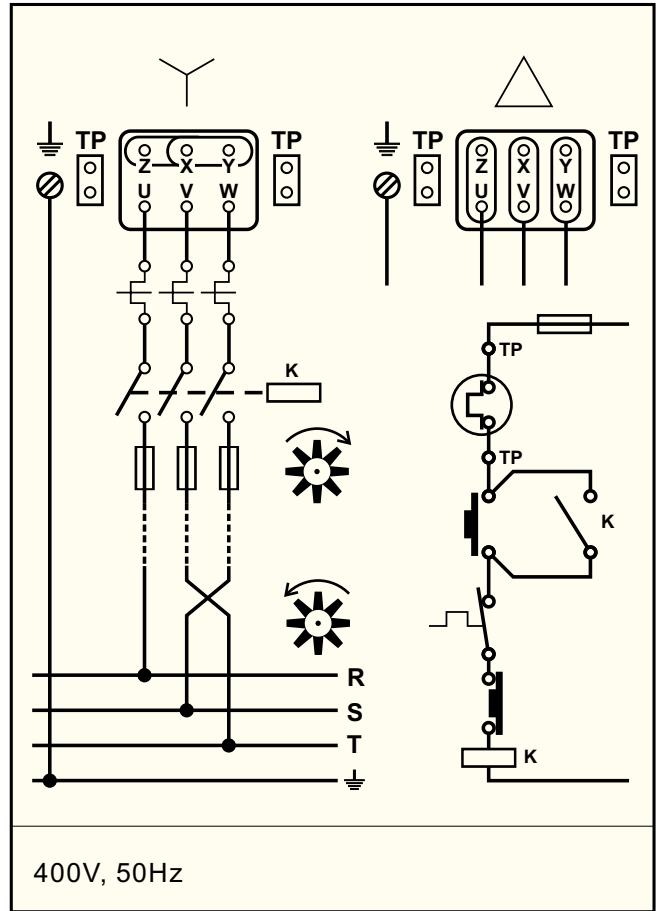
Ritn. 7 EDM-100M/H/CH, EDM-200H/CH



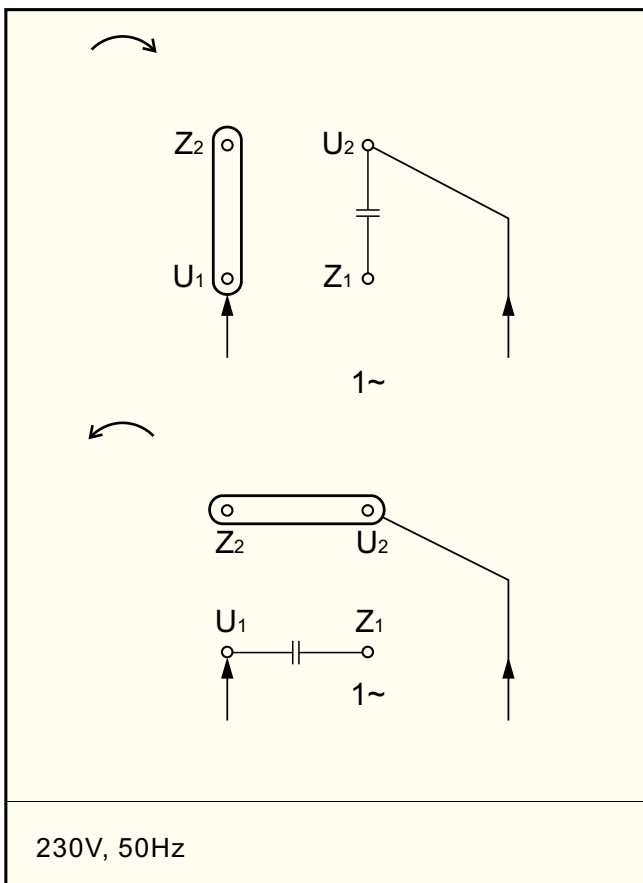
Ritn. 8 EDM-100E/CE



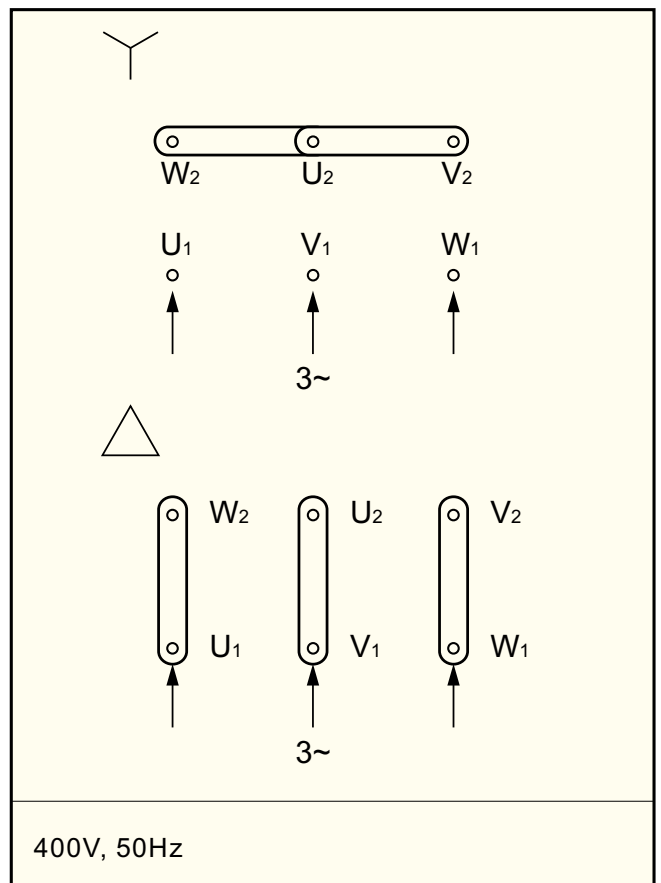
Ritn. 9 HCFB, TCFB, ILB, CTVB, CTHB, TXB, CVAB



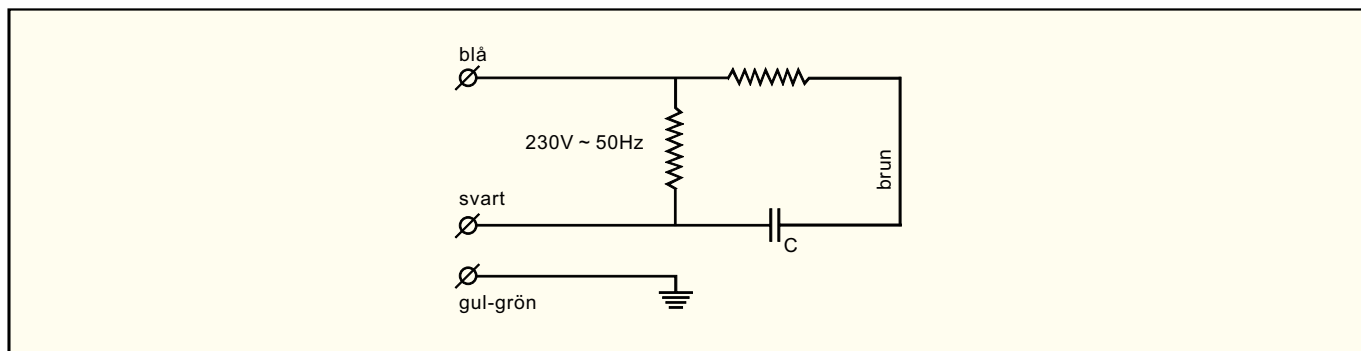
Ritn. 10 HCFT, TCFT, ILT, CTVT, CHTT, TXT, CVAT, HCOT



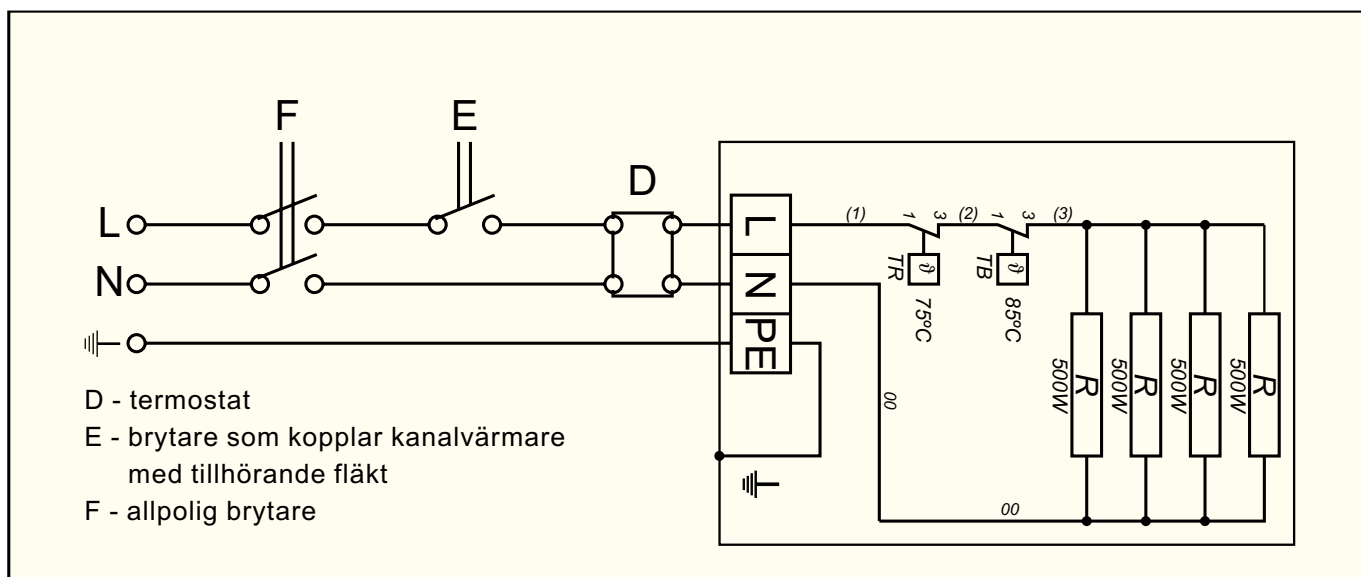
Ritn. 11 MPB, MPT, GRF, GMT, SC, QP, AFW, AFH, AFC, GSFG, GSF



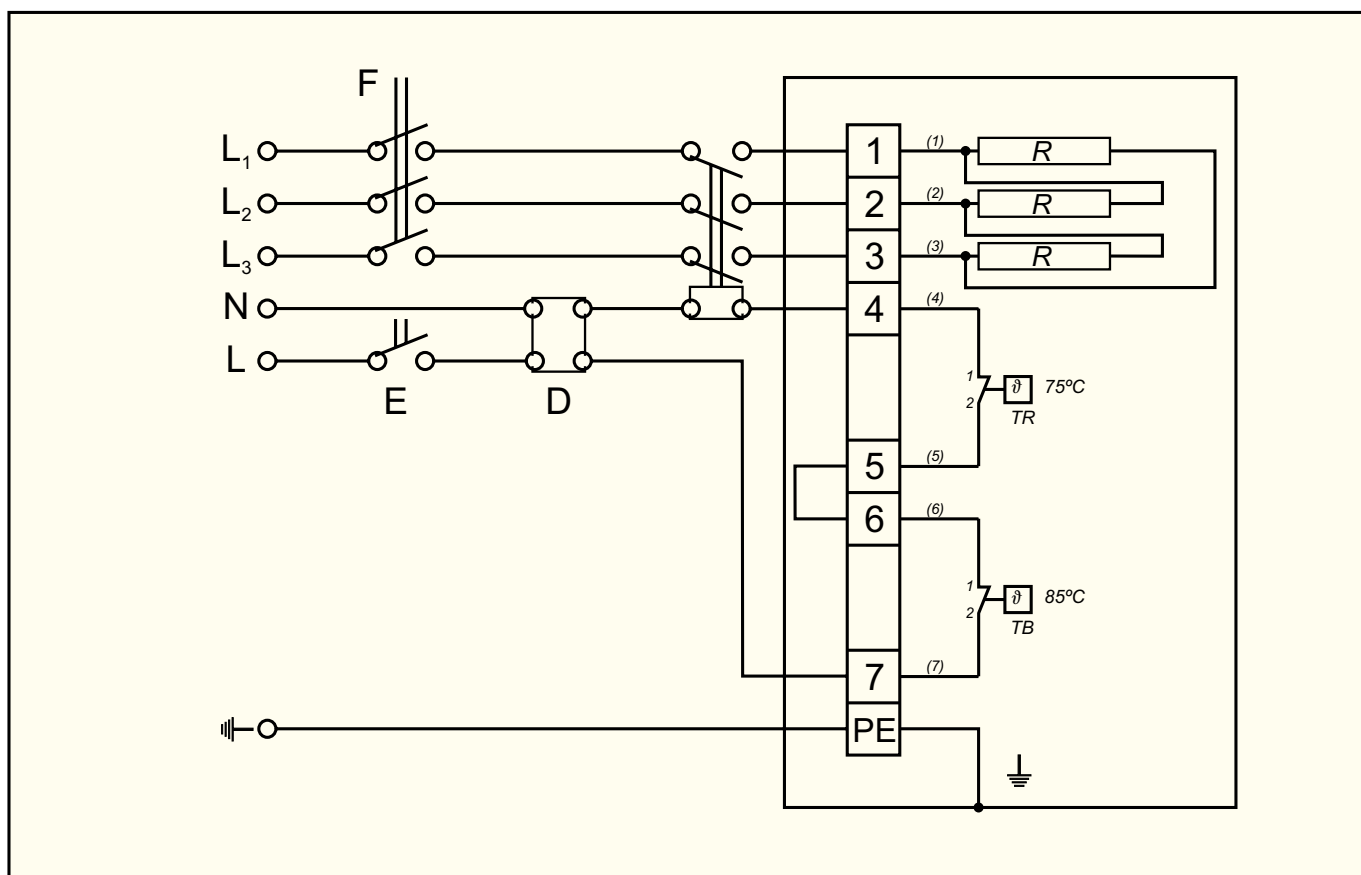
Ritn. 12 MPB, MPT, GRF, GMT, SC, QP, AFW, AFH, AFC, Q, Q2, GSFG, GST, GSF, MSB, GSB, HSB



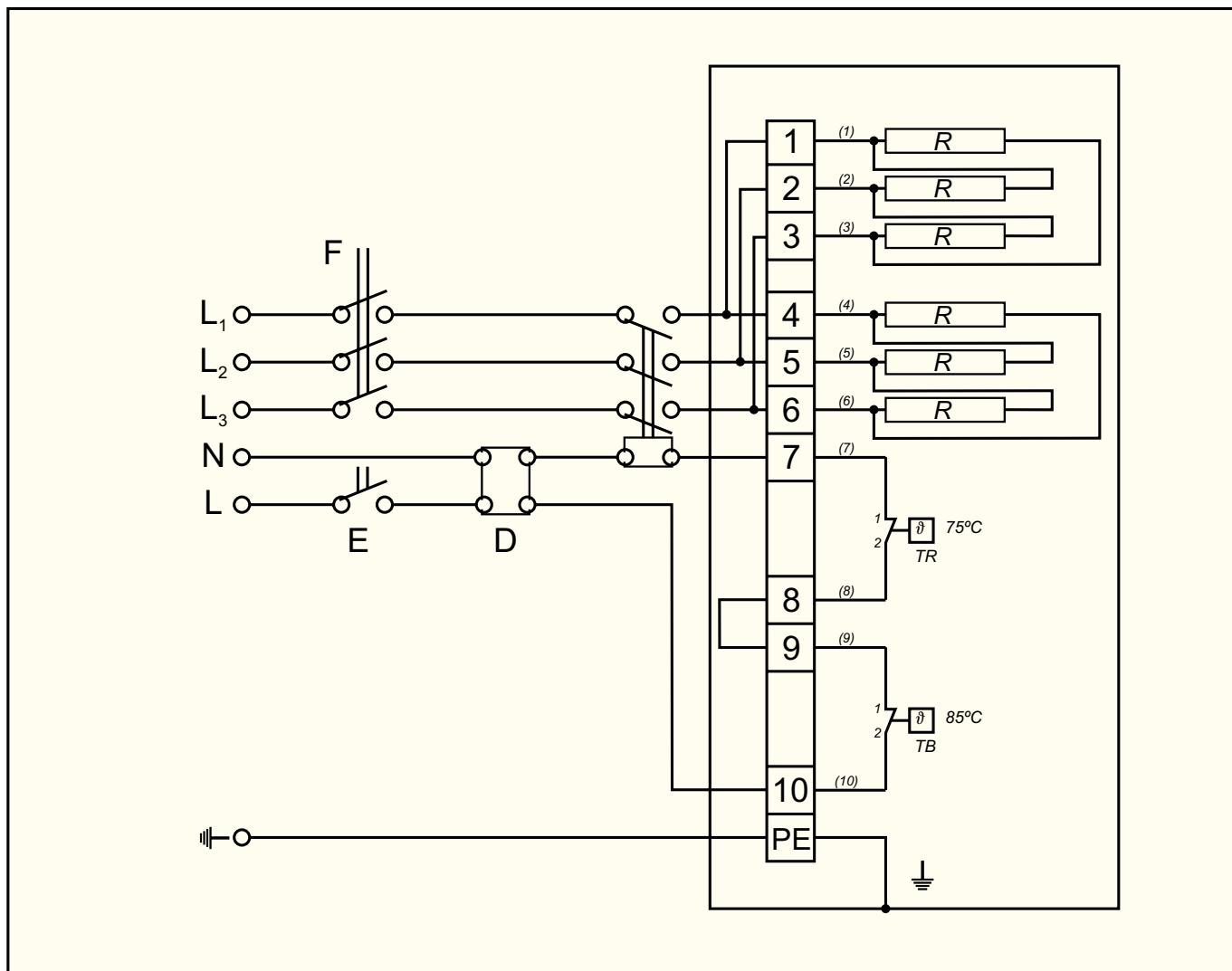
Ritn. 13 RF, IBF, AS, DEM, SEM, VENT



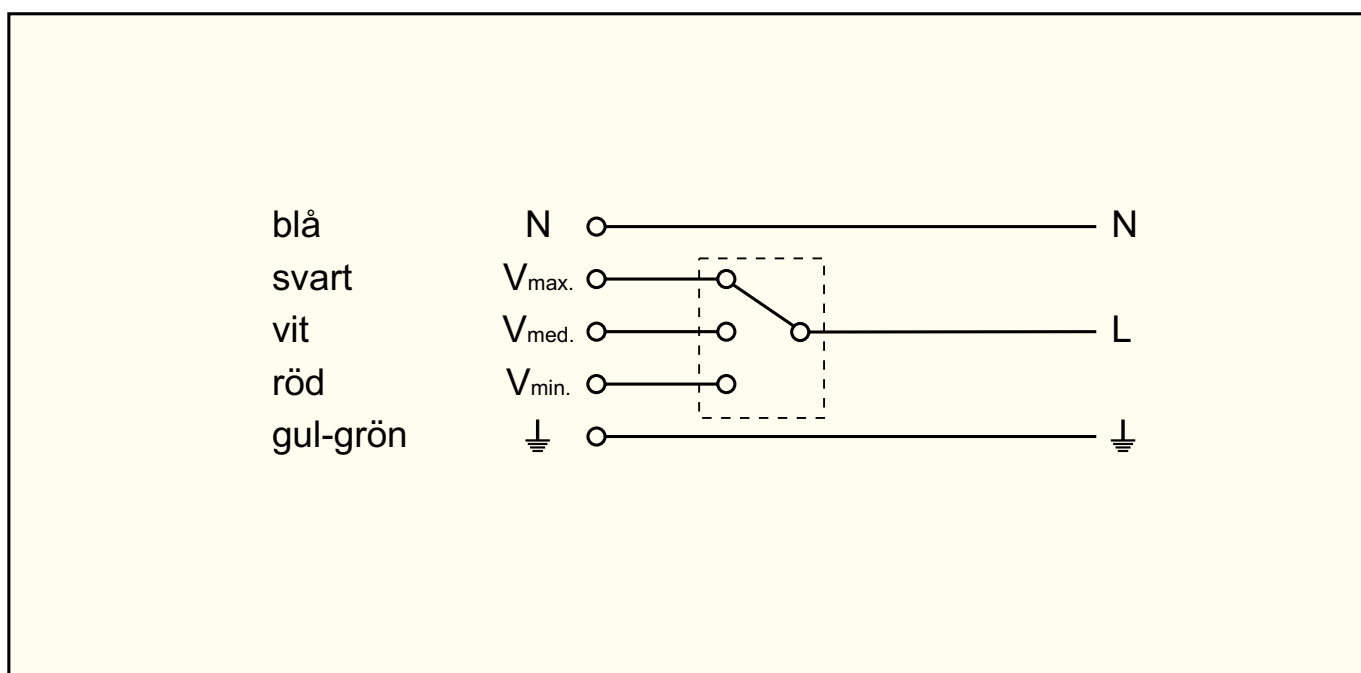
Ritn. 14 Kanalvärmare DH - enfas



Ritn. 15 Trefas kanalvärmare: DH, RH - 4,5 kW; RH-50/25-90



Ritn. 16 Trefas kanalvärmare: DH 9 kW; RH-40/20-90, RH-50/25-180



Ritn. 17 DA3V