

# CO/TECH<sup>®</sup>



**Important!**

Read the entire instruction manual carefully and make sure that you fully understand it before you use the equipment. Keep the manual for future reference.

ENGLISH

## Wet & Dry Vacuum Cleaner



**ART.NO**      **MODEL**  
**18-3088**    **SHL-DW01B-20-2**

Ver. 200803

# Wet & Dry Vacuum Cleaner

ART.NO: 18-3088 MODEL: SHL-DW01B-20-2

Please read the entire instruction manual before using and save it for future use. We apologise for any text or photo errors and any changes of technical data. If you have any questions concerning technical problems please contact our Customer Service Department (see address on reverse).

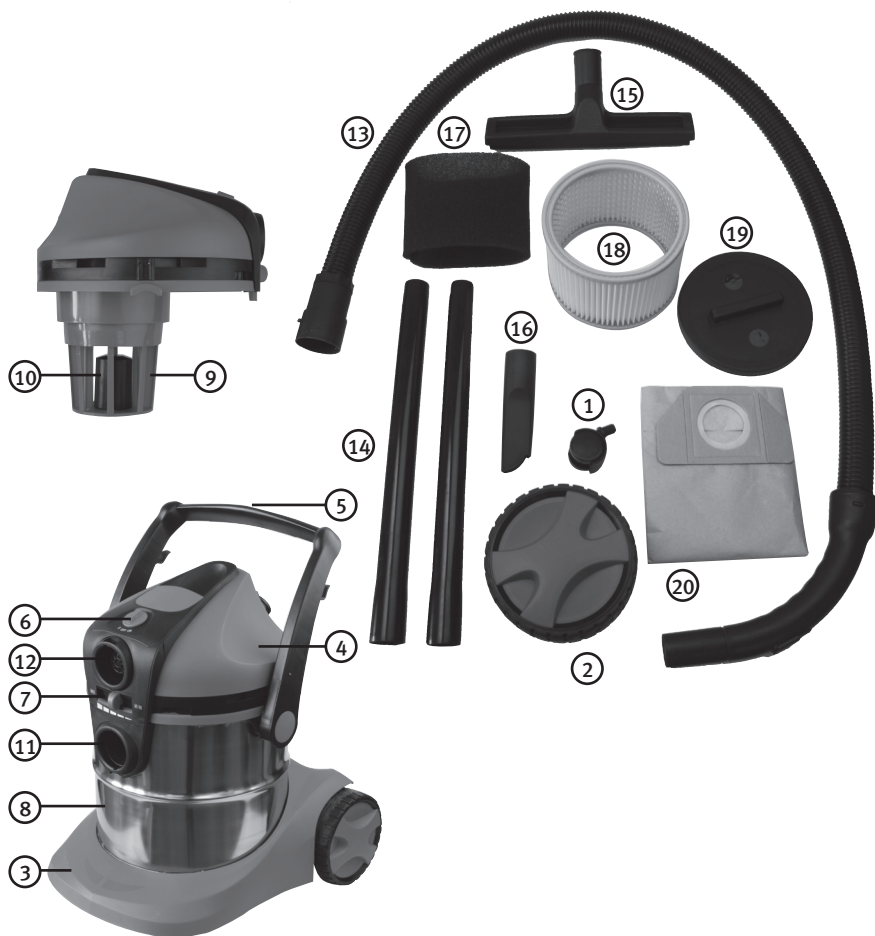
- Suitable for vacuuming e.g. sanding dust, leaves, waste water from blocked drains, etc.

## 1. Safety Instructions

- Make sure that the power supply is 230 V AC.
- Do not use the wet and dry vacuum for vacuuming flammable substances, hot coals, ashes or anything that could cause the vacuum to catch fire.
- Do not use the vacuum for vacuuming large objects or metal objects, these could damage the vacuum.
- Do not run the wheels over the mains lead or use the vacuum if the mains lead is damaged.
- Do not let children play with the vacuum, it is not a toy.
- Keep hair, fingers and loose clothing away from the air vents and moving parts of the vacuum.
- Never use the machine without a filter.
- Do not use the wet and dry vacuum if the nozzle is blocked or if any part is deformed.
- Do not use the wet and dry vacuum close to cookers, ovens or other sources of heat.
- Carry the vacuum by its handle, do not drag it around by its mains lead.
- Unplug the wet and dry vacuum when it is not in use.
- Do not expose the electrical components of the vacuum to rain or moisture.
- Store the product indoors in a dry area when it is not in use.
- If the mains lead is damaged and needs changing it should be sent to the manufacturer, an authorised service facility or qualified person to be properly repaired.

**Warning:** Electrical appliances used close to water should be connected to the power supply via a residual current device (tripping current 30 mA in not more than 30 ms).

## 2. Contents



- |                            |  |
|----------------------------|--|
| 1. Castor                  | 12. Hose connector for blowing                     |
| 2. Rear wheel              | 13. Suction hose                                   |
| 3. Base Plate              | 14. Tube (2 pcs)                                   |
| 4. Motor unit/Top          | 15. Universal nozzle for floors and carpets.       |
| 5. Combination handle      | 16. Crevice nozzle for corners and confined spaces |
| 6. Power switch            | 17. Foam filter for wet use                        |
| 7. Blow adjuster           | 18. Filter for dry use                             |
| 8. Container               | 19. Filter lid                                     |
| 9. Filter basket           | 20. Dust bag                                       |
| 10. Safety cut-out float   |  |
| 11. Suction hose connector |  |

### 3. Assembly

Make sure that the mains lead is not plugged in.

- Grip the combination handle (5) which holds the motor unit/top (4) in place and push it downwards.

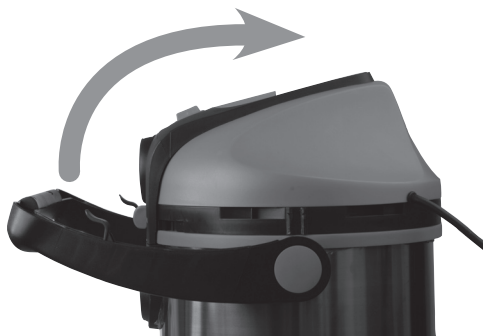


- Lift up the motor unit/top (4) and remove the accessories from the container (8).
- Check that all the parts are intact and that nothing is missing.
- Push the castor (1) into the base plate (3).
- Attach the rear wheels (2) to the base plate.
- Check that the wheels are completely pushed in.

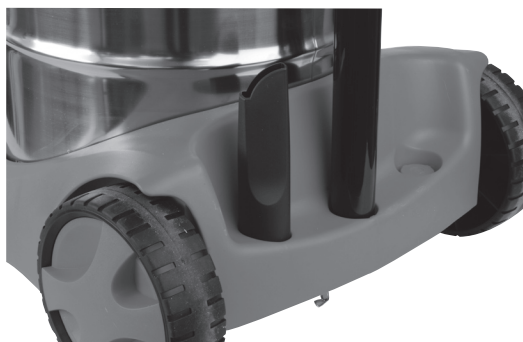


- Carefully push the container (8) onto the base plate (3) and twist it clockwise until the bayonet fitting locks the container in place.

- Insert the supplied foam filter (17)(for wet use).  
(See the "Wet Vacuuming" section)
- Insert the supplied filter cartridge (18)(for dry use).  
(See the "Dry Vacuuming" section)
- Replace the motor unit/top (4) over the container (8).
- Push the combination handle (5) back in until it "clicks" into place.



- Fit the wider end of the suction hose (13) into the hose connector (11) on the container. Line up the small lug on the suction hose with the slot in the hose connector of the container, push the hose in and twist it clockwise until it locks into place.
- Select a suitable tube and nozzle.
- Push the accessories that are not in use onto the base plate (3).



## 4. Power Switch

The power switch (6) has two settings:

**ON** Start

**OFF** Turned off



## 6. Use

Make sure that the mains lead is not plugged in.

**N.B:** The dry filter cartridge is for vacuuming dust. The foam filter must only be used for vacuuming water. When very fine-particled substances are to be vacuumed, both the filter cartridge and the dust bag must be used. The guarantee will be void if the wrong type of dust bag has been used.

### 6.1 Dry Vacuuming:

- Remove the foam filter (if it is fitted). Push the filter cartridge (18) into the filter basket (9) and twist the lid (19) clockwise to lock it.
  - Insert a dust bag into the container.
  - Empty the container before it becomes totally full and clean it after use.
  - Clean the filter cartridge when it looks clogged. Hold the lid and remove the filter cartridge. The filter can be shaken or blasted with an air hose from the inside out.
- NEVER use the wet and dry vacuum without a filter.**



### 6.2 Wet Vacuuming:

- Only use the foam filter (18) when wet vacuuming.
- Make sure that the foam filter is clean and dry and fit it over the filter basket (9) before starting to vacuum any liquid.
- The safety cut-out float (10) stops the vacuum from sucking when the water level in the container reaches a certain level, thus preventing water from entering the motor. The motor will race when the suction function has been stopped by the float. Switch the motor off and empty the container.
- Empty the container before it becomes totally full and clean it after use.
- Clean the foam filter when it looks clogged. Remove the filter and wash it by hand in water with a mild detergent, let it air-dry. **NEVER use the wet and dry vacuum without a filter.**



### 6.3 Regulating the suction:

The handle of the hose has a vent which can be opened to reduce the suction.

When vacuuming rugs and similar items it is common for the whole rug to stick to the nozzle and lift up if the suction is too strong. Open the vent a little to prevent the rug from lifting.



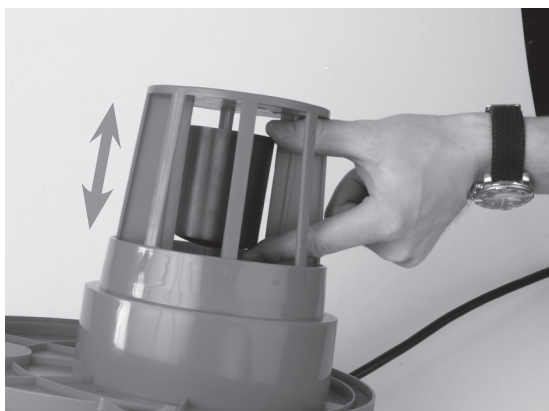
### 6.4 Blow function

- Fit the wider end of the suction hose (13) into the blow hose connector (12). Twist it clockwise until it locks into place.
- Regulate the blowing power using the MAX – MIN control.
- Regularly remove and clean the foam filter in the blow outlet if the blow function is used frequently.



## 7. Repair and maintenance

- Unplug the vacuum before carrying out any repairs or maintenance.
  - Replace or clean the filters whenever needed.
  - Empty the container before it gets completely full.
  - If the mains lead is damaged, have it replaced by a professional.
1. **Warning:** Make sure that the container is not full, that the filter is not clogged and that the hose and nozzle are not blocked every time you use the vacuum cleaner. Empty the container, clean the filter and remove any blockages in the hose and nozzle if necessary, otherwise the motor could overheat and become damaged.
  2. **Cleaning the filter cartridge and foam filter**  
Push the combination handle (5) down and lift the motor unit/top (4).
    - Clean the filter cartridge if it appears to be clogged and the suction strength is not at full capacity. Open the lid and remove the filter cartridge. The filter can be shaken or blasted with an air hose from the inside out. **NEVER use the wet and dry vacuum without a filter.**
    - Clean the foam filter if it appears to be clogged and the suction strength is not at full capacity. Open the lid and remove the foam filter. Shake the filter or hand wash it in water with a little mild detergent. Let it air dry. Replace the filter when it is completely dry. **NEVER use the wet and dry vacuum without a filter.**
  3. **Checking the safety cut-out float**
    - Push the combination handle (5) down, lift out the motor unit/top (4) and remove the foam filter.
    - Turn the motor unit/top (4) upside down, the safety float should slide back and forth easily in the filter basket.





## 8. Specifications

Rated Voltage:	230 VAC, 50 Hz
Output Power:	1400 W
Vacuum:	190 mbars
Suction Capacity:	3,000 l/min
Container volume:	20 litres
Hose, accessories:	Ø 36 mm
Mains Lead:	4 metres

## 9. Troubleshooting

<b>Motor does not start</b>	No power supply to the wall socket. Fault in the power switch, lead or motor. Container is full of liquid.	Check Get a professional to repair the defective part. Empty the container.
<b>Dust comes out of the motor</b>	The dust bag is missing or broken	Change/insert a dust bag.
<b>Poor suction and high motor speed</b>	Dust bag is full. Nozzle, hose or coupling clogged.	Change dust bag. Check if something has blocked the airflow.

## 10. Guarantee

The product has a 2-year guarantee. Keep your receipt – it is your guarantee. The guarantee is not valid if the product is used incorrectly or overloaded and does not cover normal wear and tear.



## 11. Protecting the Environment

Sort and recycle products instead of disposing of them. All machines, hoses and packing material should be sorted and handled according to local environmental regulations.

# *Declaration of Conformity*



Hereby, Clas Ohlson AB, declares that the machinery:

## **WET/DRY VACUUM CLEANER Cotech**

**Art. no: 18-3088 Model: SHL-DW01B-20-2**

Complies with the provisions of the following Directives:

98/37/EC	MACHINERY
2006/95/EC	LOW VOLTAGE EQUIPMENT
2004/108/EC	EMC

Complies with the provisions of the following harmonized standards:

EN 50366:2003+A1:06  
EN 60335-1:2002+A11,A1:04+A2:06  
EN 60335-2-2:2003+A1:04+A2:06  
EN 55014-1:2006  
EN 61000-3-2:2006  
EN 61000-3-3:1995/+A1:2001/+A2:2005

Insjön, Sweden, March 2008

A handwritten signature in black ink, appearing to read 'Klas Balkow', with a long horizontal flourish extending to the right.

Klas Balkow  
President

Clas Ohlson, 793 85 Insjön, Sweden





## SVERIGE

---

KUNDTJÄNST      Tel: 0247/445 00  
                         Fax: 0247/445 09  
                         E-post: kundtjanst@clasohlson.se

INTERNET              www.clasohlson.se

BREV                    Clas Ohlson AB, 793 85 INSJÖN

## NORGE

---

KUNDESENTER      Tlf.: 23 21 40 00  
                         Faks: 23 21 40 80  
                         E-post: kundesenter@clasohlson.no

INTERNETT            www.clasohlson.no

POST                    Clas Ohlson AS, Postboks 485 Sentrum, 0105 OSLO

## SUOMI

---

ASIAKASPALVELU    Puh: 020 111 2222  
                         Faksi: 020 111 2221  
                         Sähköposti: info@clasohlson.fi

INTERNET            www.clasohlson.fi

OSOITE                Clas Ohlson Oy, Yrjönkatu 23 A, 00100 HELSINKI

## UNITED KINGDOM

---

For consumer contact, please visit  
[www.clasohlson.co.uk](http://www.clasohlson.co.uk) and click on  
customer service.

INTERNET            [www.clasohlson.co.uk](http://www.clasohlson.co.uk)